

AMCoR

Asahikawa Medical University Repository <http://amcor.asahikawa-med.ac.jp/>

International Journal of Clinical and Medical Images (2016.4) 3
(4):1000445.

Symmetrical Bone Lesion in Both Knees of Patient with Multiple Myeloma

Satoshi Ito, Katsuya Ikuta and Yoshihiro Torimoto

Clinical-Medical Image

Title: Symmetrical Bone Lesion in Both Knees of Patient with Multiple Myeloma

Satoshi Ito^{1,2*}, Katsuya Ikuta² and Yoshihiro Torimoto³

¹Department of Oncology for Local Community Cooperation, Asahikawa Medical University Hospital, Asahikawa, Hokkaido, Japan

²Division of Gastroenterology and Hematology/Oncology, Department of Medicine, Asahikawa Medical University, Asahikawa, Hokkaido, Japan

³Oncology Center, Asahikawa Medical University Hospital, Asahikawa, Hokkaido, Japan

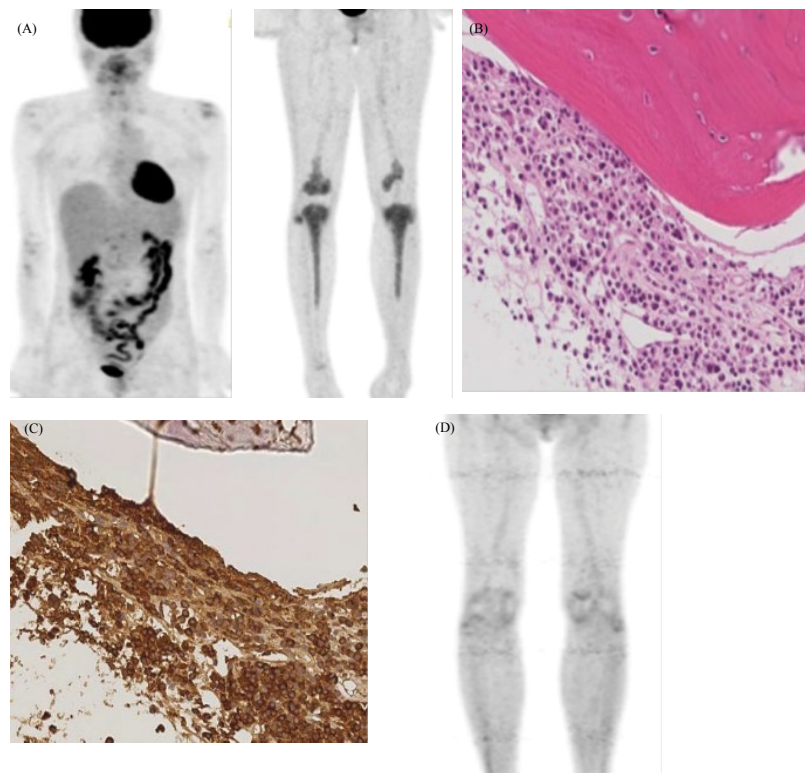


Figure 1a: FDG-PET at diagnosis of multiple myeloma. Uptake of FDG in both the distal femur and the proximal tibia.

Figure 1: (b) Histopathology of biopsied left tibia. H&E shows myeloma cell, and (c) immunohistologic stain positive for κ .

Figure 1d: FDG-PET after radiotherapy and lenalidomide-dexamethazone therapy. The lesions had disappeared.

A 46-year-old female presented to the hospital with left hip pain. Computed tomography (CT) showed osteolytic lesions of the left pelvic bone. Urinary protein electrophoresis showed M-protein of the B μ P- κ type. Atypical plasma cells were observed upon bone marrow analysis. The patient was diagnosed with multiple myeloma (MM). After radiotherapy on the left pelvic bone, bortezomib-dexamethazone (BD) therapy was performed. During BD therapy, she complained of pain in both knees. F-18 fluorodeoxyglucose positron emission tomography (FDG-PET) revealed the uptake of FDG in both the distal femur and the proximal tibia (Figure 1a). No other lesions were observed. Magnetic resonance imaging (MRI) and Thallium scintigraphy findings suggested osteonecrosis. To distinguish our findings from other bone disease, a biopsy was also performed (Figures 1b and 1c) because localized symmetrical bone lesion was rare in MM. We confirmed the lesion of MM. Subsequent FDG-PET showed that the lesions had disappeared after radiotherapy and lenalidomide-dexamethazone therapy (Figure 1d).

*Corresponding author: Satoshi Ito, Department of Oncology for Local Community Cooperation, Asahikawa Medical University Hospital, Asahikawa Medical University 2-1-1 Midorigaoka-Higashi, Asahikawa, Hokkaido 078-8510, Japan, Tel: +81-166-69-3232; Fax: +81-166-69-3239; E-mail: s-ito@asahikawa-med.ac.jp

Copyright: © 2016 Ito S, et al. This is an open-access article distributed under the terms of the Creative Commons Attribution License, which permits unrestricted use, distribution, and reproduction in any medium, provided the original author and source are credited.